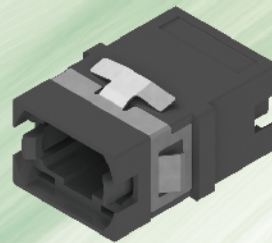
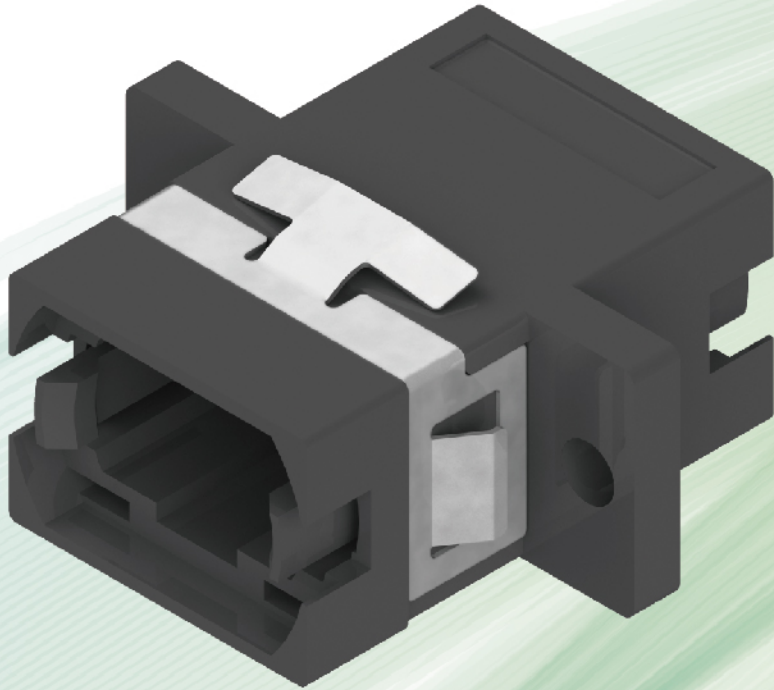


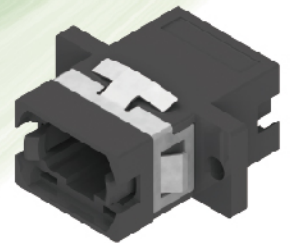
MPO ADAPTER

A REAL ONE PIECE COMPACT DESIGN

RoHS
COMPLIANT



Without flange



With flange



Integrated

VS



Welded Type

Features:

- SC footprint design;
- A patented spring ensure it stable fixed in panel;
- A customized Logo is optional;
- IEC 61754-7 and GR-1435 complaint;
- RoHs/REACH and UL94-V0 inflammability grade complaint;



Key up to
Key up



Key up to
Key down



Various color
available